



JOINT SDG FUND



UNITED NATIONS
LAO PDR

UN Joint Programme on **Establishing the basis for social protection floors in Lao PDR (2020-2021)**

LEAVING NO ONE BEHIND

To accelerate progress towards the 2030 Agenda, Lao PDR needs to continue working towards poverty and inequality reduction, improved nutrition and system sustainability



Building a social protection system in Lao PDR is crucial

People face socio-economic vulnerabilities

There are persistent systemic challenges



Poverty is high, affecting a fifth of the population. Poverty rates and stunting are higher in rural areas and among ethnic groups.



The social protection system is **fragmented**. Many programmes are donor-run and donor-funded, with limited coordination among stakeholders.



Malnutrition is high and **stunting** affects a third of all under-5 children. School meals do not provide adequate nutrition.



Financing of non-contributory schemes is mainly donor-driven, making them inconsistent and **unsustainable**.



Women and girls have **lower literacy** levels and **health status**. About a fifth of all students enrol, but do not complete the school year due to financial constraints.



Social security does not cater to the needs of the **informal economy**. Rural workers, small-scale farmers and vulnerable groups often face food and income insecurity.



The poor and vulnerable are especially affected by **economic crises** and **natural disasters**.



Human resource capabilities to design and implement social protection are limited.



Target 1.3
We can help to end poverty, by implementing nationally appropriate social protection systems for all people.

Target 2.2
We can help to end hunger and malnutrition, reduce stunting and wasting in children, address the nutritional needs of adolescent girls and pregnant women.



The UN Joint Programme on Social Protection directly addresses 4 SDG Targets



Target 16.9
We can promote inclusive societies, access to justice and build accountable institutions-one way is by providing legal identity and birth registration to all.

Target 17.3
We can contribute to mobilising additional financial resources from multiple sources for sustainable development.



Expected results of the UN Joint Programme

Government's planning, leadership, management and implementation capacity to implement the National Social Protection Strategy is enhanced

At least 1,400 children benefit from a new integrated welfare package, including the Mother and Early Childhood Grant, child wellbeing services and support for birth registration

National partners have a better understanding of social protection and how to design programmes

A feasibility assessment and roadmap for the Mother and Early Childhood Grant is concluded

Government officials are aware of the impact of social protection and importance of allocating domestic resources

The Mother and Early Childhood Grant and its MIS are designed

An M&E framework for the National Social Protection Strategy is designed in alignment with SDG 1.3

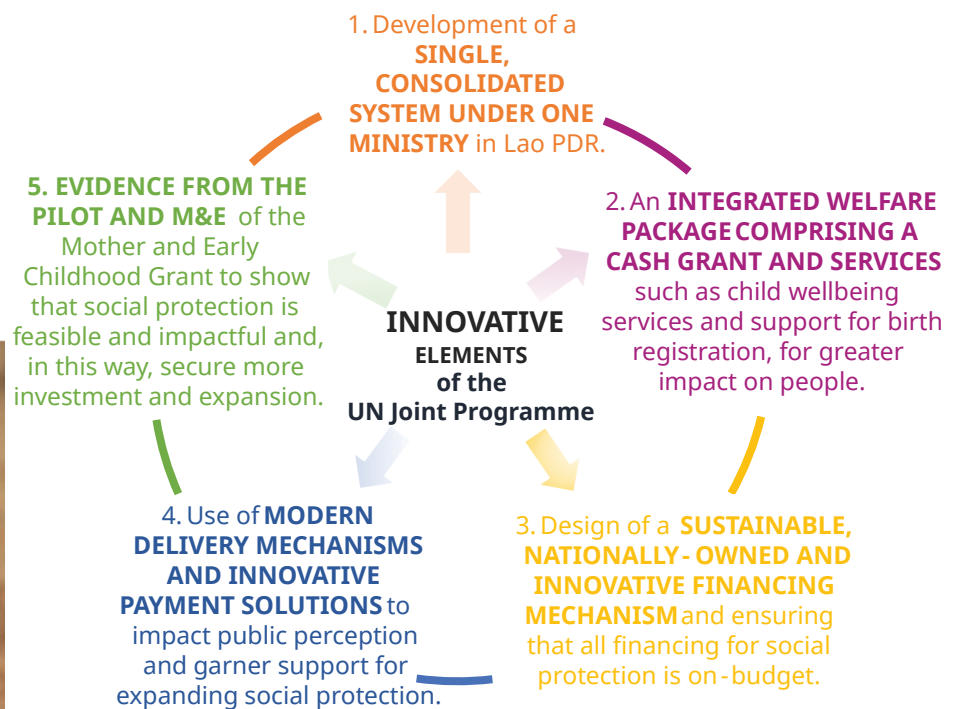
Institutions and agents are prepared for the implementation of the grant

All financing for social protection is ensured to be on-budget

The Mother and Early Childhood Grant is piloted in at least one of the poorest districts

A National Social Protection Fund is designed, to implement innovative financing solutions

An M&E framework for the Mother and Early Childhood Grant is implemented



Joint Fund for Sustainable Development Goals (SDGs)



- * Created in 2014 to accelerate progress towards the 17 SDGs and 2030 Agenda.
- * Financed with contributions from governments, international organizations and private sector.
- * Invests to address challenges to sustainable development, mobilise strategic alliances and facilitate new sources of financing for the SDGs.

For more information, contact matthew.johnson-idan@one.un.org and del@ilo.org

Twitter: <https://twitter.com/jointSDGFund>
 Joint SDG Fund: <https://www.jointsdgfund.org/programme/leaving-no-one-behind-establishing-basis-social-protection-floors-lao-pdr>